



IN CAHOOTS WITH  
[Re] Waste

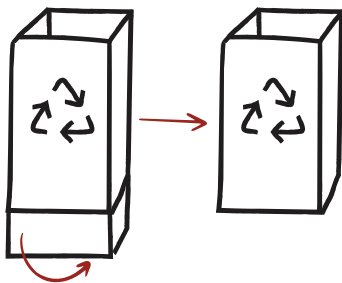
# Recycling Program Instructions

Standard cannabis packaging produces millions of pounds of waste each year. By teaming up with Boondocks, you and your customers are helping keep this waste out of landfills and making grass a little greener. Here's all the nitty gritty on how to get going with your recycling bin and what to do once you've filled 'er up.

**PACKAGE INCLUDES:**

- 1 X FLAT BIN BODY
- 1 X FLAT LID ASSEMBLY
- 1 X BACKER PANEL
- 1 X INTERNAL BAG

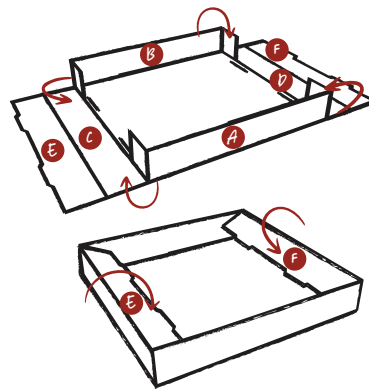
## How to set up your bin



### STEP 1

#### Build the bin body

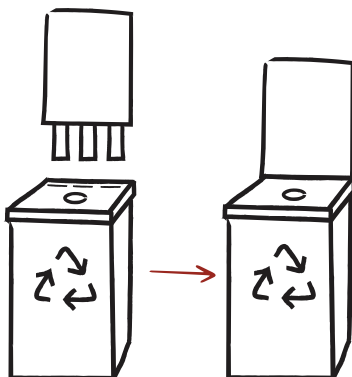
Push the flat body of the bin open so it forms a box. Fold in the bottom base to stabilize it. Add the internal bag to the bin to collect the packaging.



### STEP 2

#### Assemble the lid

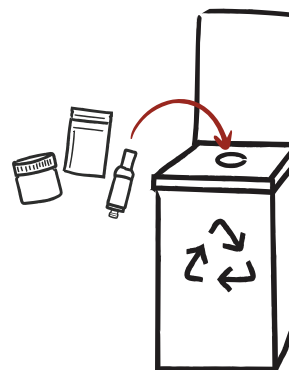
Fold up sides A and B of the lid and push in the end tabs so they are perpendicular to sides A and B. Lift sides C and D over the end tabs to allow panels E and F to lock into the slots.



### STEP 3

#### Put 'er all together

Place the lid on the base and slide the backer panel into the 3 slots found at the back of the lid.



### STEP 4

#### Fill 'er up

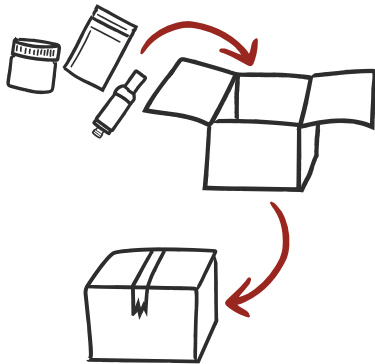
Put the assembled in out in your store and watch it fill up. Easy peasy.



# Recycling Program Instructions

Standard cannabis packaging produces millions of pounds of waste each year. By teaming up with Boondocks, you and your customers are helping keep this waste out of landfills and making grass a little greener. Here's all the nitty gritty on how to get going with your recycling bin and what to do once you've filled 'er up.

## What to do when your bin is full



### STEP 1

#### Pack 'er up

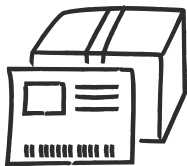
Once your bin is full, move the packaging from the internal bag into a shipping box and securely tape the box closed. If you remove the internal bag from the bin to do this, make sure you put it back in.



### STEP 2

#### Let us know

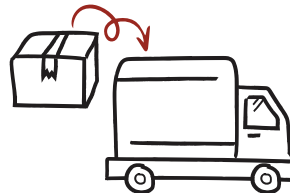
Request a pre-paid shipping label by emailing [shipping@rewaste.ca](mailto:shipping@rewaste.ca) with the subject line: **[YOUR STORE NAME] – [YOUR STORE LOCATION] – Subscription.**



### STEP 3

#### Label it

Once received, attach your pre-paid shipping label to the box prior to courier pick-up.



### STEP 4

#### We'll come to you

Our partners at [Re] Waste will schedule a courier pick-up from your location. That's it!

## Got questions?

If you have any questions, give us a holler at [boondocks@motiflabs.ca](mailto:boondocks@motiflabs.ca) or **1.855.527.1048**